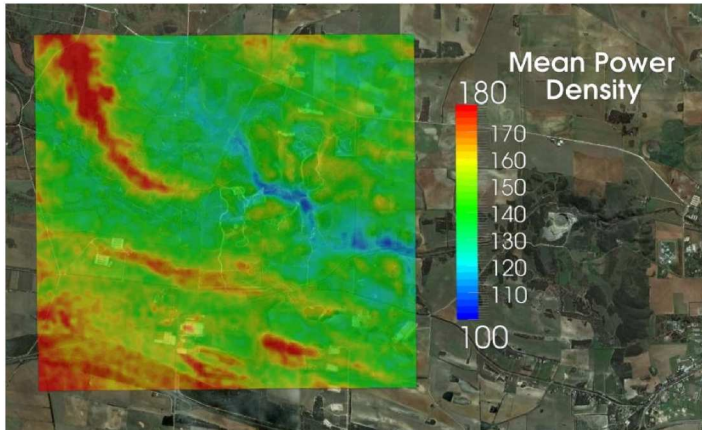


cyclopic energy

TAILORED WIND POWER SOLUTIONS



overview of services



wide area study

- wide-area model of terrain, vegetation, and built-up areas;
- large-scale flow simulation of wind resource, informed by available nearby wind data;
- wind resource maps and mean wind statistics for a range of locations;
- locate promising sites for more detailed site analyses.



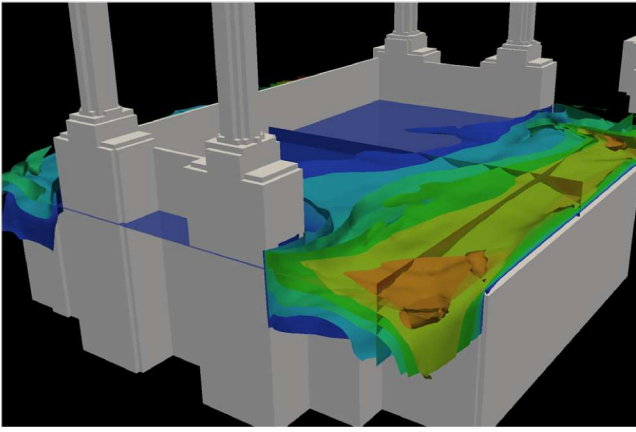
feasibility study

- site analysis evaluating terrain, structural and vegetation features affecting the wind resource;
- first estimate of wind resource, based on available nearby wind data;
- identification of sites of interest for wind monitoring;
- recommendations for project scope.



wind resource monitoring

- 3-12 month wind monitoring campaign;
- sensor and data-logging equipment shipped to site, installed by client or contractors;
- wind data accessed remotely;
- long-term mean wind resource, detailed wind profile, diurnal and seasonal wind regimes.



turbine siting

- detailed flow simulation over terrain, buildings, and trees in the area of interest;
- focus on areas of high wind speed, mean power density, and turbine energy yield;
- avoid adverse effects from trees, buildings and other turbines, minimising turbulence and wind shear;
- informs wind turbine placement and predicted performance.



visualisation

- digitally rendered images of turbine installation, integrated with Google Earth;
- photographic visualisations and photo-montage;
- visual amenity studies for client and community consultation.

service delivery

for manufacturers and distributors:

- feasibility study and turbine siting can be integrated with existing sales and installation process;
- reduced delivery costs for volume-purchase of services;
- provides quality assurance;
- successful installations attract direct sales.

for project partners:

- 'on-the-ground' partner provides project management and consultation;
- modular delivery: project partner engages Cyclopic Energy for highly specialised services and expert technical advice.

for clients:

- tailored consulting services for small wind energy projects;
- technical advice and wind turbine technology assessments;
- wind energy project development.

Cyclopic Energy Pty. Ltd.
ABN 33 128 457 894

telephone: +61 8 7120 6308

facsimile: +61 8 8212 1884

e-mail: info@cyclopicenergy.com

A decorative graphic of a globe at the bottom of the page, showing the continents in a light blue color against a white background.